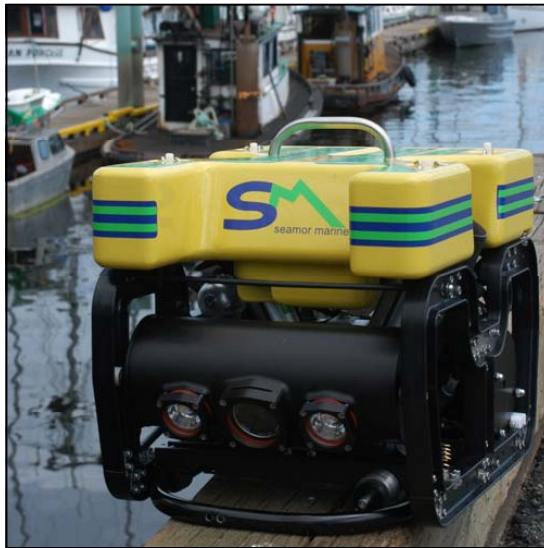
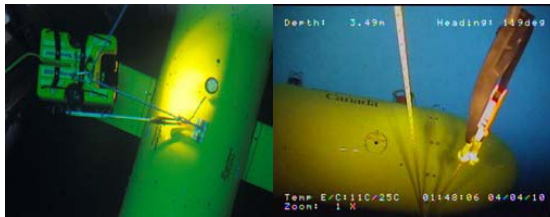


SEAMOR 300F ROV

The Seamor 300F ROV is a powerful, industrial inspection-class mini-ROV designed for a wide range of underwater challenges. High resolution imagery and bright illumination couple to provide high-quality images digitally captured using intuitive, precise ROV control.



Focus Industries

- Aquaculture
- Forensics/SAR
- Hydro Inshore
- Marine Security
- Offshore
- Pipeline Inspection
- Potable Water
- Recreational
- Research
- Structural Analysis
- Salvage Operations
- Hull Inspection

- **Open Frame & Modular Components**
Makes for easy modifications to meet any users demands

- **Intuitive Controller**
An advance controller allows the user to command the vehical with great persision and confidence

- **High Resolution Imagery**
High resoluion camera allows the user to identify solutions with ease

- **Auto Depth / Heading**
Auto Depth / Heading allows you to conentrate on other tasks

- **Customizable Platform**
Allows for many choices of tooling and sensors

FEATURES

- Leak detectors give operators advanced warning of a problem, possibly preventing expensive repairs.
- Sonar allows operation in water so murky that navigation would be impossible with only cameras.
- 3D positioning and tracking system allows the operator to know the vehicle's position regardless of visibility conditions, and makes it easier to ensure coverage for inspection operations.
- Electric or manual wind tether reels for tether management.
- Integrated controller with LCD monitor and DVR
- Aux LED lighting for task specific illumination
- High Definition (HD) forward viewing available

SEAMOR 300F PLATFORM SPECIFICATIONS

Vehicle

Size (W X L X H)	14" X 18.6" X 14" 355mm X 472mm X 355mm
Weight in air	~50lb / 23kg
Construction	Aluminium and high impact ABS
Depth Rating	1,000 ft / 300m
Speed	Up to 3 knots
Power	750W max load

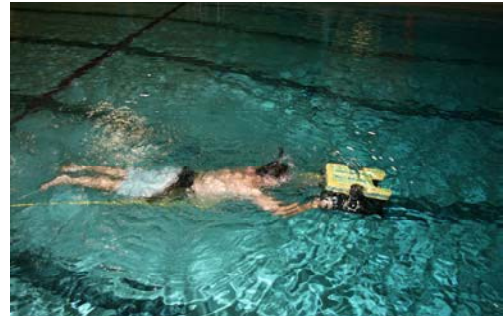


Thrusters

Horizontal	2x90w (150w optional)
Vertical/Lateral	2x90w (150w optional)
Thrust	~12 lb/5.5 kg per thruster

Forward Camera & Lights

Type	Color 1/4" CCD (FCB1X10A Sony)
Sensitivity	1.5 lux min.
Resolution	460+ TV lines (380,000 effective pixels)
Focus	Manual and Auto
Iris	Auto
Zoom	40:1 (10x optical, 4x digital)
Tilt Range	180 Degree
Lights	2x50W, variable intensity, tilt with camera



Aux. Camera

Type	Sony Color	1/4" CCD
Sensitivity	<0.5 lux	
Resolution	380 TV Lines	
Focus	Fixed	
Iris	Auto	
Lights	12 high intensity LED's, ON/OFF	



Tether

Length	550ft/165m, 1100ft/335m standard Custom lengths up to 3,000ft/900m
Diameter	0.35"/9mm
Weight in water	Neutrally buoyant in fresh

Sensors

- Pressure/Depth
- Heading and Focus Length
- Leak and temperature alarms and indicator
- Thruster stall alarms and indicator
- 2 year limited warranty, spare thruster, tool kit, manual and general spares kit



Seamor 300F Options

- True HD FWD View Camera with ~2,000,000 effective pixels
- Up to 3 aux. cameras
- Tritech, BlueView or Imagenex sonar integration
- Tritech Micron Eco Sounder
- Single or Dual Function Manipulator/Gripper
- Custom umbilical lengths up to 3000ft/915m
- Tritech, LinkQuest or Desert Star Positioning
- LYYN video optimization in controller
- CYGNUS thickness gauge
- 1000 lumen aux. LED light modules
- Extended warranty (up to 5yrs.)

The Seamor 300F open frame platform and umbilical with 4 copper, 4 multi-mode fibres and 2 twisted pairs allow this ROV to be customized to suit your application and your specific needs.

Ocean Systems, Inc - 3901 Smith Avenue - Everett, WA 98201 USA

Phone: 1-800-355-4234 / 425-258-0778

sales@oceansystemsinc.com / www.oceansystemsinc.com